

RESOLUTION NO. 2021-140

A RESOLUTION OF THE CITY COUNCIL OF THE CITY OF ELK GROVE IDENTIFYING THE PROJECTS TO BE INCLUDED IN THE SB1 PROJECT LISTING TO RECEIVE FUNDING FROM THE ROAD MAINTENANCE AND REHABILITATION ACCOUNT (RMRA) FOR FISCAL YEAR 2021-22 AS REQUIRED BY THE ROAD REPAIR AND ACCOUNTABILITY ACT OF 2017 (SB1)

WHEREAS, Senate Bill 1 (SB 1), the Road Repair and Accountability Act of 2017 (Chapter 5, Statutes of 2017) was passed by the Legislature and signed into law by then Governor Brown in April 2017 to address the significant multi-modal transportation funding shortfalls statewide; and

WHEREAS, SB 1 includes accountability and transparency provisions that will ensure the residents of Elk Grove are aware of the projects proposed for funding in the community and which projects have been completed each fiscal year; and

WHEREAS, the City must adopt by resolution a list of projects proposed to receive fiscal year funding from the Road Maintenance and Rehabilitation Account (RMRA), created by SB 1, which must include a description and the location of each proposed project, a proposed schedule for the project's completion, and the estimated useful life of the improvement; and

WHEREAS, the City, will receive an estimated \$3,410,265 in RMRA funding in Fiscal Year 2021-22; from SB 1; and

WHEREAS, this is the fifth year in which the City is receiving SB 1 funding that will enable the City to continue essential road maintenance and rehabilitation projects, safety improvements, and increasing access and mobility options for the traveling public that would not have otherwise been possible; and

WHEREAS, the City has undergone a robust public process to ensure the public input into our community's transportation priorities/project list; and

WHEREAS, the City used a Pavement Management System to develop the SB 1 project list to ensure revenues are being used on the most high-priority and cost-effective projects that also meet the community's priorities for transportation investment; and

WHEREAS, the funding from SB 1 will help the City maintain and rehabilitate approximately 327 street segments throughout the City this year and 156 street segments for similar projects into the future; and

WHEREAS, the 2018 California Statewide Local Streets and Roads Needs Assessment found that the City's streets and roads are in a "very good" condition and this revenue will help the City increase the overall quality of the road system, and over the next decade will bring the City's streets and roads up to an excellent condition; and

WHEREAS, the SB 1 project list and overall investment in local streets and roads infrastructure with a focus on basic maintenance and safety, investing in complete streets infrastructure, and using cutting-edge technology, materials and practices, will have significant positive benefits citywide.

NOW, THEREFORE, BE IT RESOLVED by the City Council of the City of Elk Grove:

- 1) The foregoing recitals are true and correct; and
- 2) The following list of newly proposed projects will be funded in-part or solely with FY2021-22 Road Maintenance and Rehabilitation Account revenues:
 - A. 2022 Pavement Slurry Seal and Resurfacing Project (WPR022):
 - Improvements to be completed by this Project will likely include asphalt concrete repairs, crack sealing, slurry seal and cape seal treatments, as well as miscellaneous concrete repairs associated with this work.
 - A Street List is provided in Exhibit A, attached hereto and incorporated herein by reference.
 - Staff anticipates that this Project will start construction in the Fall of 2021 and be completed by October of 2022.
 - The estimated useful life of all expected improvements is between five years (pavement seals) and ten years (pavement patches and repairs).
 - B. Elk Grove Florin Complete Street and Resurfacing Project (WTR078):
 - This Project, which will be the third phase of a multi-modal and state of good repair funding on this corridor, will include pavement resurfacing, sidewalk gap closures, ADA curb ramp upgrades, the addition of new class II and class III bike lanes, upgrades to video detection, and pedestrian interval prioritization.
 - A Project Location Map is provided in Exhibit B, attached hereto and incorporated herein by reference.
 - Staff anticipates that this Project will start construction in the summer of 2023 and is anticipated to be complete in the fall of 2023.
 - The estimated useful life of all items identified is between fifteen years and twenty years.
- 3) The following previously proposed and adopted projects may also utilize FY 2019-20 and 2020-21 Road Maintenance and Rehabilitation Account Revenues in their delivery. With relisting of these projects in the adopted fiscal year resolution, the City is reaffirming to the public and state its intent to fund these projects with Road Maintenance and Rehabilitation Account revenues.
 - A. 2020 Pavement Slurry Seal and Resurfacing Project (WPR020):
 - This Project includes asphalt concrete repairs, crack sealing, slurry and cape seal treatments
 - A Street List is provided in Exhibit C, attached hereto and incorporated herein by reference.
 - This Project began construction in March of 2020 and all work was completed by October of 2020.
 - The estimated useful life of all items identified is between five years (pavement seals) and ten years (pavement patches and repairs).

B. 2021 Pavement Slurry and Resurfacing Project (WPR021):

- This Project includes asphalt concrete repairs, crack sealing, slurry, and cape seal treatments.
- A Streets List is provided in Exhibit D, attached hereto and incorporated herein by reference.
- This Project began construction in July of 2020 and is anticipated to be complete in October of 2021.
- The estimated useful life of all items identified is between five years (pavement seals) and ten years (pavement patches and repairs).

C. Arterial Roads Rehabilitation (WPR014):

- This Project will rehabilitate or resurface pavement on portions of Waterman Road and Elk Grove Florin Road and provide Class II bike lanes. Also included are a mid-block pedestrian crossing along Elk Grove-Florin Road and a new sidewalk along one section of the west side of Waterman Road just south of Bond Road.
- A Project Location Map is provided in Exhibit E, attached hereto and incorporated herein by reference.
- Staff anticipates that this Project will start construction in the spring of 2022 and is anticipated to be complete in the fall of 2022.
- The estimated useful life of all items is between seven years and twenty years.

D. Railroad Street Improvements & Old Town Plaza Project (WTR049/WCE022):

- The Project includes construction of a full pavement section, curbs, gutters and sidewalks on Railroad St. from Elk Grove Blvd. to its southern terminus at Elk Grove Creek and on Grove St. from Railroad St. to the eastern edge of the Old Town Plaza; curb, gutter, and sidewalk along Elk Grove Blvd; two parking lots south of the Old Town Plaza; and underground utilities, in addition to hardscape and landscape of the plaza area and construction of a pavilion structure and seating.
- A Location Map for this Project is included as Exhibit F, attached hereto and incorporated herein by reference.
- This Project began construction in June 2020 and is estimated to be completed by June 2021.
- The estimated useful life of the roadway items identified is between fifteen years and twenty years.

PASSED AND ADOPTED by the City Council of the City of Elk Grove this 26th day of May 2021



BOBBIE SINGH-ALLEN, MAYOR of the
CITY OF ELK GROVE

ATTEST:


JASON LINDGREN, CITY CLERK

APPROVED AS TO FORM:



JONATHAN P. HOBBS,
CITY ATTORNEY

Exhibit A - WPR022 Project Location List

Subzone	Street Name	Begin Location	End Location	Anticipated Treatment	Area (sf)	Maint. Zone	Fund #
4	AGNETA CT	DAYLOR WAY	CDS	TYPE II - SLURRY SEAL	6,104	0	227
4	CEDARVIEW WAY	BENEDIX WAY	W of BABSON DR	TYPE II - SLURRY SEAL	16,614	0	227
4	BEARINT WAY	RENWICK AVE	DAYLOR ST	TYPE II - SLURRY SEAL	47,658	0	227
4	BENEDIX WAY	EAST LAKE DR	LAKEPOINT DR	TYPE II - SLURRY SEAL	56,420	0	227
4	ELKINS CT	RENWICK AVE	CDS	TYPE II - SLURRY SEAL	6,650	0	227
4	DAYLOR ST BEARINT WY ALY	RENWICK AVE	BEARINT WAY	CAPE SEAL	28,260	0	227
4	BOURNVILLE CT	BENEDIX WAY	CDS	TYPE II - SLURRY SEAL	7,660	0	227
4	E LAGUNA CT	EAST LAKE DR	CDS	TYPE II - SLURRY SEAL	16,250	0	227
4	WEST HAACK CT	EAST LAKE DR	CDS	TYPE II - SLURRY SEAL	5,174	0	227
4	JENKINTOWN CT	RENWICK AVE	CDS	TYPE II - SLURRY SEAL	6,930	0	227
4	E MUMFORD CT	PEETS ST	CDS	TYPE II - SLURRY SEAL	10,461	0	227
4	EAST LAKE DR	PEETS ST	FASSETT WAY	TYPE II - SLURRY SEAL	140,806	0	227
4	BENEDIX WAY	BABSON DR	EAST LAKE DR	TYPE II - SLURRY SEAL	31,018	0	227
4	E ISLAND CT	EAST LAKE DR	CDS	TYPE II - SLURRY SEAL	35,724	0	227
4	E LAGUNA WAY	EAST LAKE DR	RENWICK AVE	TYPE II - SLURRY SEAL	31,226	0	227
4	ENGLESIDE CT	HAACK WAY	CDS	TYPE II - SLURRY SEAL	4,602	0	227
4	VAUX AVE	LAGUNA MAIN ST	HAUSSMAN ST	TYPE II - SLURRY SEAL	38,964	0	227
4	DAYLOR ST	BENEDIX WAY	RENWICK AVE	TYPE II - SLURRY SEAL	53,872	0	227
4	HAACK WAY	EAST LAKE DR	BABSON DR	TYPE II - SLURRY SEAL	27,118	0	227
4	LAKEPOINT DR	BABSON DR	BENEDIX WAY	TYPE II - SLURRY SEAL	37,728	0	227
4	RENWICK AVE	LAGUNA MAIN ST	EAST CDS	TYPE II - SLURRY SEAL	23,800	0	227
4	EPHRAIM WAY	DAYLOR ST	RENWICK AVE	TYPE II - SLURRY SEAL	17,238	0	227
4	HADDONFIELD CT	DAYLOR ST	CDS	TYPE II - SLURRY SEAL	7,660	0	227
4	HAUSSMANN ST	RENWICK AVE	LAGUNA BLVD	TYPE II - SLURRY SEAL	24,514	0	227
4	FASSETT WAY	S of BABSON DR	N of BABSON DR	TYPE II - SLURRY SEAL	38,570	0	227
4	LAGUNA MAIN ST	LAGUNA BLVD	RENWICK AVE	TYPE II - SLURRY SEAL	43,245	0	227
4	GREENDALE CT	RENWICK AVE	CDS	TYPE II - SLURRY SEAL	6,996	0	227
4	SCRUGGS CT	RENWICK AVENUE	CDS	TYPE II - SLURRY SEAL	7,062	0	227
4	WEST ISLAND CT	EAST LAKE DRIVE	CDS	TYPE II - SLURRY SEAL	35,880	0	227
4	HAVERTOWN CT	RENWICK AVE	CDS	TYPE II - SLURRY SEAL	10,428	0	227
4	GRIMSHAW WAY	FASSETT WAY	LAKEPOINT DR	TYPE II - SLURRY SEAL	60,398	0	227
4	PEETS ST	VAUX AVENUE	E LAKE DR	TYPE II - SLURRY SEAL	26,384	0	227
4	WINNINGHAM CT	GRIMSHAW WAY	CDS	TYPE II - SLURRY SEAL	3,328	0	227
4	GRIDLEY CT	GRIMSHAW WAY	CDS	TYPE II - SLURRY SEAL	4,225	0	227
4	MAYTEN WAY	LAKEPOINT DR	GRIMSHAW WAY	TYPE II - SLURRY SEAL	26,234	0	227
4	YORKSHIP CT	BENEDIX WAY	CDS	TYPE II - SLURRY SEAL	8,938	0	227
4	HAACK CT	HAACK WY	END OF CDS	TYPE II - SLURRY SEAL	910	0	227
5	PACKWOOD CT	LOMBARDY WY	EAST END-CDS	TYPE II - SLURRY SEAL	6,801	0	227
5	FASSETT CT	LESNAR WAY	CDS-EAST END	TYPE II - SLURRY SEAL	4,550	0	227

Exhibit A - WPR022 Project Location List

Subzone	Street Name	Begin Location	End Location	Anticipated Treatment	Area (sf)	Maint. Zone	Fund #
5	BRODIAEA CT	LOMBARDY WAY	CDS-EAST END	TYPE II - SLURRY SEAL	4,524	0	227
5	BRUBAKER CT	LESNAR WAY	CDS	TYPE II - SLURRY SEAL	7,608	0	227
5	BENEDIX WAY	WOODROW WAY	BABSON DR	TYPE II - SLURRY SEAL	14,612	0	227
5	HAACK WAY	BABSON DR	LESNAR WAY	TYPE II - SLURRY SEAL	8,112	0	227
5	DELAIR WAY	BENEDIX WAY	RENWICK AVE	TYPE II - SLURRY SEAL	22,490	0	227
5	FASSETT WAY	N of BABSON DR	LESNAR WAY	TYPE II - SLURRY SEAL	11,890	0	227
5	LAKEPOINT DR	WINDY COVE DR	FOUR WINDS DR	TYPE II - SLURRY SEAL	38,304	0	227
5	SAUL CT	LOMBARDY WY	CDS-EAST END	TYPE II - SLURRY SEAL	4,680	0	227
5	PACKWOOD WAY	FOUR WINDS DR	LOMBARDY WY	TYPE II - SLURRY SEAL	12,480	0	227
5	PETERSBURG CT	RENWICK AVENUE	CDS	TYPE II - SLURRY SEAL	6,240	0	227
5	WINDY COVE DR	FOUR WINDS DRIVE	LAKEPOINT DRIVE	TYPE II - SLURRY SEAL	61,740	0	227
5	WOODROW WAY	RENWICK AVENUE	BENEDIX WAY	TYPE II - SLURRY SEAL	19,214	0	227
5	RENWICK AVE	BABSON DR	WOODROW WAY	TYPE II - SLURRY SEAL	21,398	0	227
5	LOMBARDY WAY	SAUL WAY	PACKWOOD WAY	TYPE II - SLURRY SEAL	15,600	0	227
5	LUFKIN WAY	SAUL WAY	FOUR WINDS DR	TYPE II - SLURRY SEAL	16,796	0	227
5	MORRISTOWN CT	RENWICK AVE	CDS	TYPE II - SLURRY SEAL	4,875	0	227
5	SAUL WAY	BABSON DR	LOMBARDY WY	TYPE II - SLURRY SEAL	13,468	0	227
5	BABSON DR DELAIR WAY ALY	RENWICK AVE	BENEDIX WAY	TYPE II - SLURRY SEAL	15,840	0	227
5	E HAACK CT	LESNAR WAY	CDS	TYPE II - SLURRY SEAL	7,530	0	227
5	LESNAR WAY	HAACK WAY	FASSETT WAY	TYPE II - SLURRY SEAL	14,300	0	227
5	DELAIR WAY WOODDRAW WAY ALY	RENWICK AVE	BENEDIX WAY	TYPE II - SLURRY SEAL	14,670	0	227
14	Lovewell Ct	Boxelder Way	CDS	TYPE II - SLURRY SEAL	7,299	2	228
14	SATILLIA CT	EDISTO WAY	CDS	TYPE II - SLURRY SEAL	7,559	2	228
14	BANTAM WAY	MALHEUR WAY	EDISTO WAY	TYPE II - SLURRY SEAL	17,290	2	228
14	LAGUNA POINTE WAY	LAGUNA BLVD	FRANKLIN BLVD	TYPE II - SLURRY SEAL	41,054	2	228
14	SALADO CT	WATAUGA WAY	CDS	TYPE II - SLURRY SEAL	7,013	2	228
14	ELWELL CT	FRAMINGTON WAY	CDS-WEST END	TYPE II - SLURRY SEAL	6,467	2	228
14	MOREAU CT	MALHEUR WAY	CDS	TYPE II - SLURRY SEAL	9,587	2	228
14	CONCHAS CT	EDISTO WAY	CDS	TYPE II - SLURRY SEAL	8,131	2	228
14	WATAUGA WAY	MALHEUR WY	BOXELDER WAY	TYPE II - SLURRY SEAL	18,980	2	228
14	MALHEUR WAY	SHENANGO WAY	WYLIE DR	TYPE II - SLURRY SEAL	54,600	2	228
14	ST. JONES CT	EDISTO WAY	CDS - WEST END	TYPE II - SLURRY SEAL	8,781	2	228
14	NEWFOUND WAY	MILLSTONE DR	ELLIOT RANCH RD	TYPE II - SLURRY SEAL	38,454	2	228
14	WYLIE DR	ELLIOT RANCH ROAD	EDISTO WAY	TYPE II - SLURRY SEAL	11,340	2	228
14	ELWELL WAY	FRAMINGTON WAY	NEWFOUND WAY	TYPE II - SLURRY SEAL	5,460	2	228
14	POWDER CT	NEWFOUND WY	CDS-WEST END	TYPE II - SLURRY SEAL	6,623	2	228
14	SUWANNEE CT	EDISTO WAY	CDS	TYPE II - SLURRY SEAL	6,441	2	228
14	ESCAMBIA CT	EDISTO WAY	CDS	TYPE II - SLURRY SEAL	8,469	2	228
14	SILVIES WAY	MALHEUR WY	EDISTO WY	TYPE II - SLURRY SEAL	26,650	2	228

Exhibit A - WPR022 Project Location List

Subzone	Street Name	Begin Location	End Location	Anticipated Treatment	Area (sf)	Maint. Zone	Fund #
14	MILLSTONE DR	FRANKLIN BLVD	MALHEUR WAY	TYPE II - SLURRY SEAL	20,772	2	228
14	WHEELER CT	EDISTO WAY	CDS	TYPE II - SLURRY SEAL	5,245	2	228
14	EDISTO WAY	NEOSHO DR	WYLIE DR	TYPE II - SLURRY SEAL	67,262	2	228
14	NEOSHO DR	LAGUNA BLVD	SHENANGO WAY	TYPE II - SLURRY SEAL	33,264	2	228
14	FABIUS CT	SHENANGO WAY	CDS	TYPE II - SLURRY SEAL	3,900	2	228
14	SELWAY CT	NEWFOUND WY	CDS-SOUTH END	TYPE II - SLURRY SEAL	6,649	2	228
14	BOXELDER WAY	SILVIES WAY	WATAUGA WAY	TYPE II - SLURRY SEAL	6,838	2	228
14	SHENANGO WAY	MALHEUR WY	EDISTO WY	TYPE II - SLURRY SEAL	30,030	2	228
14	ABERT CT	SILVIES WAY	CDS-NORTH END	TYPE II - SLURRY SEAL	6,415	2	228
14	CALAMUS CT	SILVIES WAY	CDS	TYPE II - SLURRY SEAL	6,363	2	228
14	FRAMINGTON WAY	ELWELL WAY	NEWFOUND WAY	TYPE II - SLURRY SEAL	21,580	2	228
16	OLIVEHURST WAY	FRYE CREEK DR	MAPLEHURST WAY	CAPE SEAL	18,642	2	228
16	TANA CT	MAYBERRY WY	CDS-WEST END	CAPE SEAL	9,167	2	228
16	THOROE CT	MAYBERRY WY	CDS-WEST END	CAPE SEAL	9,375	2	228
16	MEADOWLAND WAY	FRYE CREEK DR	MAYBERRY WAY	CAPE SEAL	15,860	2	228
16	APPLEHURST WAY	FRYE CREEK DR	MAPLEHURST WAY	CAPE SEAL	21,814	2	228
16	PINEHURST WAY	MEADOWLAND WAY	OLIVEHURST WAY	CAPE SEAL	6,890	2	228
16	BIG CREEK WAY	FRYE CREEK DR	HARBORSIDE WAY	TYPE II - SLURRY SEAL	4,004	2	228
16	BIG CREEK WAY	GEMWOOD WAY	FRYE CREEK DR	TYPE II - SLURRY SEAL	18,278	2	228
16	OCEAN BREEZE CT	HARBORSIDE WAY	CDS	TYPE II - SLURRY SEAL	6,203	2	228
16	BIRKDALE CT	MAYBERRY WAY	CDS-WEST END	TYPE II - SLURRY SEAL	6,526	2	228
16	TALL GRASS WAY	CYPRESS CREEK WAY	DEEPDALE WAY	TYPE II - SLURRY SEAL	12,350	2	228
16	ASHURST CT	MAPLEHURST WAY	CDS-WEST END	TYPE II - MICROSURFACING	7,503	2	228
16	BEECHURST CT	MAPLEHURST WAY	CDS-WEST END	TYPE II - MICROSURFACING	4,914	2	228
16	CLAY GLEN WAY	LAKE PLEASANT DR	LODESTAR WAY	TYPE II - SLURRY SEAL	27,248	2	228
16	MARINO CT	MAYBERRY WAY	CDS-WEST END	TYPE II - MICROSURFACING	9,037	2	228
16	FRYE CREEK DR	BIG HORN BLVD (W)	BIG HORN BLVD (E)	TYPE II - SLURRY SEAL	200,508	2	228
16	HARVEST MOON CT	CLAY GLEN WAY	CDS	TYPE II - SLURRY SEAL	7,555	2	228
16	GEMWOOD WAY	BIG CREEK WAY	MOONLIGHT WAY	TYPE II - SLURRY SEAL	34,736	2	228
16	SUGARNOTCH CT	MOON RUN WY	CDS-SOUTH END	TYPE II - SLURRY SEAL	2,652	2	228
16	MOSS AGATE CT	LAKE PLEASANT DR	CDS-NORTH END	TYPE II - SLURRY SEAL	6,177	2	228
16	OWL CT	CYPRESS CREEK WAY	CDS	TYPE II - SLURRY SEAL	5,449	2	228
16	STONEY CREEK WAY	CLAY GLEN WY	MOON RUN WY	TYPE II - SLURRY SEAL	14,248	2	228
16	DEEPDALE WAY	FRYE CREEK DR	FRANCESCA ST	TYPE II - SLURRY SEAL	48,386	2	228
16	LAKE PLEASANT DR	FRYE CREEK DR	FRANKLIN BLVD	TYPE II - SLURRY SEAL	47,988	2	228
16	MOON CREEK WAY	CYPRESS CREEK WAY	DEEPDALE WAY	TYPE II - SLURRY SEAL	8,242	2	228
16	MOON RUN WAY	CLAY GLEN WAY	STONEY CREEK WAY	TYPE II - SLURRY SEAL	18,486	2	228
16	CLEAR STAR CT	STONEY CREEK WAY	CDS	TYPE II - SLURRY SEAL	8,491	2	228
16	FRANCESCA ST	FRYE CREEK DR (E. 1/S)	CITY LIMIT - NORTH	TYPE II - SLURRY SEAL	15,548	2	228

Exhibit A - WPR022 Project Location List

Subzone	Street Name	Begin Location	End Location	Anticipated Treatment	Area (sf)	Maint. Zone	Fund #
16	MAPLEHURST WAY	APPLEHURST WAY	OLIVEHURST WAY	TYPE II - MICROSURFACING	6,864	2	228
16	CYPRESS CREEK WAY	DEEPDALE WAY	FRANCESCA ST	TYPE II - SLURRY SEAL	22,334	2	228
16	ELFIN CT	ELK HOLLOW CT	CDS	TYPE II - SLURRY SEAL	7,555	2	228
16	ELK HOLLOW CT	FRANCESCA ST	CDS	TYPE II - SLURRY SEAL	19,333	2	228
16	ANCHOR BAY WAY	BIG HORN BLVD	BIG CREEK WAY	TYPE II - SLURRY SEAL	35,698	2	228
16	HARBORSIDE WAY	ANCHOR BAY WAY	BIG CREEK WAY	TYPE II - SLURRY SEAL	20,592	2	228
16	LEWIE WAY	STONEY CREEK WAY	LAKE PLEASANT DR	TYPE II - SLURRY SEAL	10,504	2	228
16	MOONLIGHT WAY	MAYBERRY WAY	DEEPDALE WAY	TYPE II - MICROSURFACING	50,180	2	228
16	BREAKER POINT CT	HARBORSIDE WAY	CDS	TYPE II - SLURRY SEAL	8,127	2	228
16	COMPASS CT	ANCHOR BAY WAY	CDS	TYPE II - SLURRY SEAL	5,553	2	228
16	LODESTAR WAY	MAYBERRY WAY	FRYE CREEK DR	TYPE II - SLURRY SEAL	10,166	2	228
16	DEEPDALE WAY	MAYBERRY WAY	FRYE CREEK DR (E. I/S)	TYPE II - SLURRY SEAL	51,766	2	228
16	MAYBERRY WAY	MEADOWLAND WAY	LODESTAR WAY	TYPE II - MICROSURFACING	21,216	2	228
22	Splendio Way	Romanzo Way	Storia Way	CAPE SEAL	20,670	2	228
22	Romanzo Way	Di Lusso Dr	Storia Way	CAPE SEAL	78,260	2	228
22	Sandy Souza Way	Di Lusso Dr	Romanzo Way	CAPE SEAL	27,560	2	228
22	CIELO CT	STORIA WAY	CDS	CAPE SEAL	5,059	2	228
22	POESIA CT	RISATA WY	CDS-WEST END	CAPE SEAL	8,941	2	228
22	Desto Ct	Splendio Way	CDS	CAPE SEAL	5,865	2	228
22	FRESCA WAY	STORIA WAY	DI LUSSO DR	CAPE SEAL	7,046	2	228
22	CONCERTO CT	DI LUSSO DR	CDS-NORTH END	TYPE II - SLURRY SEAL	8,439	2	228
22	CASA ALAMEDA WAY	STORIA WAY	DI LUSSO DR	TYPE II - MICROSURFACING	6,110	2	228
22	CERROLINDA CIR	DI LUSSO DR (E)	DI LUSSO DR (W)	TYPE II - MICROSURFACING	33,384	2	228
22	CANDELLARIA CT	DI LUSSO DR	CDS	TYPE II - MICROSURFACING	4,825	2	228
22	PASEO GRANDE WAY	STORIA WY (N)	STORIA WY (S)	TYPE II - MICROSURFACING	24,180	2	228
22	RISATA WAY	VICINO DR	DI LUSSO DR	TYPE II - MICROSURFACING	27,118	2	228
22	STORIA WAY	DI LUSSO DR	ROMANZO WY	TYPE II - MICROSURFACING	56,290	2	228
22	PALOMA BLANCA CT	STORIA WY	CDS-WEST END	TYPE II - MICROSURFACING	6,125	2	228
22	SERRA BELLA CT	DI LUSSO DR	CDS-WEST END	TYPE II - MICROSURFACING	5,059	2	228
22	FRANKFORT CT	FERNWAY CT	CDS	TYPE II - MICROSURFACING	7,555	2	228
22	VENETIAN CT	DI LUSSO DR	CDS-SOUTH END	TYPE II - MICROSURFACING	5,891	2	228
22	DUOVO WAY	DI LUSSO DR	RISATA WAY	TYPE II - MICROSURFACING	24,596	2	228
22	FERNWAY CT	DI LUSSO DR	CDS - EAST END	TYPE II - MICROSURFACING	20,191	2	228
22	VICINO DR	DI LUSSO DR	BIG HORN BLVD	TYPE II - SLURRY SEAL	60,480	2	228
22	DI LUSSO DR	LAGUNA BLVD	BRUCEVILLE RD	TYPE II - MICROSURFACING	153,026	2	228
23	BANBURY DR	CASTLEFORD WAY	LAGUNA PARK DR	CAPE SEAL	13,320	2	227
23	BANYON DR	WILLOW VALE WAY	LAGUNA WOODS DR	TYPE II - SLURRY SEAL	13,448	2	227
23	BROWNSTONE CT	WILLOW VALE WAY	CDS-EAST END	TYPE II - SLURRY SEAL	15,251	2	227
23	CANDALERO CT	CASTLEFORD WAY	CDS-NORTH END	CAPE SEAL	12,785	2	227

Exhibit A - WPR022 Project Location List

Subzone	Street Name	Begin Location	End Location	Anticipated Treatment	Area (sf)	Maint. Zone	Fund #
23	CASTLEFORD WAY	LAWNVIEW WAY (W)	LAWNVIEW WAY (S)	CAPE SEAL	46,436	2	227
23	CLARIDGE CT	CASTLEFORD WAY	CDS-EAST END	TYPE II - SLURRY SEAL	7,299	2	227
23	CURRY CREEK DR	LAGUNA OAKS DR	SPRING CREEK WAY	TYPE II - SLURRY SEAL	11,160	2	227
23	E BROOK WAY	LAWNVIEW WAY	CASTLEFORD WAY	TYPE II - SLURRY SEAL	32,292	2	227
23	EDENSBURY CT	WILLOW VALE WAY	CDS-WEST END	TYPE II - SLURRY SEAL	16,239	2	227
23	FELICIA WAY	STONEGATE DR	LAGUNA OAKS DR	TYPE II - SLURRY SEAL	37,336	2	227
23	FOX CREEK DR	SPRING CREEK WAY	LAGUNA PARK DR	CAPE SEAL	12,440	2	227
23	LADY DI WAY	STONEGATE DR	FELICIA WAY	CAPE SEAL	21,294	2	227
23	LAGUNA OAKS DR	LAGUNA BLVD	LAGUNA PARK DR	TYPE II - SLURRY SEAL	109,032	2	227
23	LAGUNA WOODS DR	FRANKLIN BLVD	LAGUNA OAKS DR	TYPE II - SLURRY SEAL	67,639	2	227
23	LANCASHIRE CT	CASTLEFORD WAY	CDS-NORTH END	TYPE II - SLURRY SEAL	12,187	2	227
23	LAWNVIEW WAY	CASTLEFORD WAY	LAGUNA PARK DR	TYPE II - SLURRY SEAL	77,480	2	227
23	PENBROOK CT	CASTLEFORD WY	CDS-NORTH END	TYPE II - SLURRY SEAL	12,369	2	227
23	RAVINE CREEK WAY	SPRING CREEK WY (W)	SPRING CREEK WY (E)	CAPE SEAL	22,776	2	227
23	SPRING CREEK WAY	CURRY CREEK DR	CURRY CREEK DR	CAPE SEAL	70,850	2	227
23	STANMORE WAY	LAWNVIEW WY	CASTLEFORD WY	TYPE II - SLURRY SEAL	25,610	2	227
23	STONEGATE DR	WILLOWVALE WY	LAGUNA WOODS DR	TYPE II - SLURRY SEAL	10,570	2	227
23	STONEGATE DR	LAGUNA WOODS DR	FELICIA WAY	CAPE SEAL	7,072	2	227
23	VALLEY WILLOW WAY	WILLOW VALE WY (W)	WILLOW VALE WY (S)	TYPE II - SLURRY SEAL	51,168	2	227
23	VALMAR CT	VALLEY WILLOW WY	CDS-WEST END	CAPE SEAL	14,548	2	227
23	WILLOW VALE WAY	STONEGATE DR (W)	STONEGATE DR (E)	TYPE II - SLURRY SEAL	121,784	2	227
27	FOX RUN WAY	PINE VISTA WAY	LAGUNA PARK DR	CAPE SEAL	16,018	2	227
27	Thickett Ct	Fox Run Way	CDS	CAPE SEAL	7,971	2	227
27	Tule Ct	Laguna Park Dr	CDS	CAPE SEAL	9,925	2	227
27	Thresher Ct	Foulks Ranch Dr	CDS	CAPE SEAL	7,503	2	227
27	PINE VISTA WAY	LAGUNA PARK DR	FOX RUN WY	CAPE SEAL	34793	2	227
27	SUNNY GLADE CT	PINE VISTA WY	CDS-NORTH END	CAPE SEAL	9895	2	227
27	WINDY FEN CT	PINE VISTA WY	CDS-SOUTH END	CAPE SEAL	5605	2	227
46	STATHOS DR	FRANK GREG WAY	143' E OF FRANK GREG WAY	TYPE II - MICROSURFACING	5,720	1	261
46	STATHOS DR	FRANKLIN HIGH RD	FRANK GREG WAY	TYPE II - MICROSURFACING	56,124	1	261
46	JENNY LYNN WAY	FRANK GREG WAY	STATHOS DR	TYPE II - SLURRY SEAL	26,390	1	261
46	JENNY LYNN WAY	STATHOS DR	JEFJEN WY	TYPE II - SLURRY SEAL	53,586	1	261
46	JEFJEN WAY	FRANKLIN HIGH RD	FRANK GREG WAY	TYPE II - SLURRY SEAL	50,492	1	261
46	NICK WAY	STATHOS DR	PATTI WAY	TYPE II - SLURRY SEAL	45,214	1	261
46	NICK WAY	FRANK GREG WAY	STATHOS DR	TYPE II - SLURRY SEAL	22,386	1	261
46	PATTI WAY	145' E OF FRANK GREG WAY	STATHOS DR	TYPE II - SLURRY SEAL	23,712	1	261
46	OSCAR CIR	FRANK GREG WY	FRANK GREG WY	TYPE II - SLURRY SEAL	57,798	1	261
46	PATTI WAY	STATHOS DR	JEFJEN WY	TYPE II - SLURRY SEAL	39,364	1	261
46	FRANK GREG WAY	PATTI WAY	FRANKLIN HIGH RD	TYPE II - SLURRY SEAL	17,420	1	261

Exhibit A - WPR022 Project Location List

Subzone	Street Name	Begin Location	End Location	Anticipated Treatment	Area (sf)	Maint. Zone	Fund #
46	FRANK GREG WAY	PATTI WAY	PATTI WAY	TYPE II - SLURRY SEAL	53,196	1	261
46	GUS WAY	FRANK GREG WAY	PATTI WAY	TYPE II - SLURRY SEAL	25,168	1	261
46	TIMKIR WAY	PATTI WY	FRANK GREG WY	TYPE II - SLURRY SEAL	15,626	1	261
46	COOP DR	FRANKLIN HIGH RD	PATTI WAY	TYPE II - SLURRY SEAL	17,524	1	261
50	GRISHAM WAY	MICHENER DR	W STOCKTON BLVD	TYPE II - SLURRY SEAL	42,458	2	227
50	MAILER WAY	CAPOTE WAY	FAULKNER WAY	TYPE II - SLURRY SEAL	17,420	2	227
50	FAULKNER WAY	WEST STOCKTON BLVD	CAPOTE WAY	TYPE II - SLURRY SEAL	16,562	2	227
50	MICHENER DR	WEST STOCKTON BLVD	NORTH END	TYPE II - SLURRY SEAL	30,576	2	227
50	CRICHTON WAY	W STOCKTON BLVD	PAULHAUS WAY	TYPE II - SLURRY SEAL	27,560	2	227
50	LAKE WILLOW WAY	WILLOWBERRY WAY	DUNISCH RD	TYPE II - SLURRY SEAL	48,542	2	227
50	POND BROOK WAY	LAGUNA BROOK WAY	DUNISCH RD	TYPE II - SLURRY SEAL	26,338	2	227
50	WILDWILLOW CT	LAKE WILLOW WY	CDS - SOUTH END	TYPE II - SLURRY SEAL	5,193	2	227
50	WILLOWBERRY WAY	WOODED BROOK DRIVE	LAKE WILLOW WAY	TYPE II - SLURRY SEAL	64,662	2	227
50	DUNISCH RD	W STOCKTON BLVD	WOODED BROOK DR	TYPE II - SLURRY SEAL	59,232	2	227
50	HUNTERS BROOK CT	LAGUNA BROOK WAY	CDS	TYPE II - SLURRY SEAL	4,803	2	227
50	WOODED BROOK DR	W STOCKTON BLVD	DUNISCH RD	TYPE II - SLURRY SEAL	61,776	2	227
50	VISTA CREEK WAY	POND BROOK WY	WYNDWILLOW WY	TYPE II - SLURRY SEAL	13,104	2	227
50	LAGUNA BROOK WAY	WOODED BROOK DR	DUNISCH RD	TYPE II - SLURRY SEAL	94,816	2	227
50	WYNDWILLOW WAY	LAGUNA BROOK WAY	DUNISCH RD	TYPE II - SLURRY SEAL	18,382	2	227
50	BROOK WILLOW WAY	WOODED BROOK DR	LAKE WILLOW WAY	TYPE II - SLURRY SEAL	6,630	2	227
50	DUCKS POND WAY	DUNISCH RD	LAKE WILLOW WAY	TYPE II - SLURRY SEAL	16,562	2	227
50	CAPOTE WAY	WEST STOCKTON BLVD	CRICHTON WAY	TYPE II - SLURRY SEAL	17,758	2	227
50	BRETON WAY	W STOCKTON BLVD	GRISHAM WAY	TYPE II - SLURRY SEAL	15,106	2	227
50	GLASTRIS WAY	GRISHAM WAY	NORTH END	TYPE II - SLURRY SEAL	8,762	2	227
50	LAUFFER WAY	GLASTRIS WAY	GRISHAM WAY	TYPE II - SLURRY SEAL	36,393	2	227
50	PAULHAUS WAY	WEST STOCKTON BLVD	GRISHAM WAY	TYPE II - SLURRY SEAL	19,214	2	227
62	DIRUSSO CIR	DENALI CIR	DENALI CIR	TYPE II - SLURRY SEAL	35,230	5	265
62	ELSTON CIR	DENALI CIR	DENALI CIR	TYPE II - SLURRY SEAL	39,000	5	265
62	JOEBAR CIR	DENALI CIR	DENALI CIR	TYPE II - SLURRY SEAL	29,068	5	265
62	PARTINGTON CIR	DENALI CIR	DENALI CIR	TYPE II - SLURRY SEAL	38,636	5	265
62	DENALI CIR	BIG HORN BLVD	BIG HORN BLVD	TYPE II - SLURRY SEAL	146,592	5	265
100	MOSHER RD	WATERMAN RD	GRANT LINE RD	CAPE SEAL	65,640	3	263

WPR022 Project Streets List Total

5,713,952



Elk Grove Florin Road Complete Street & Resurfacing - WTR078

Project Location Map

EXHIBIT B

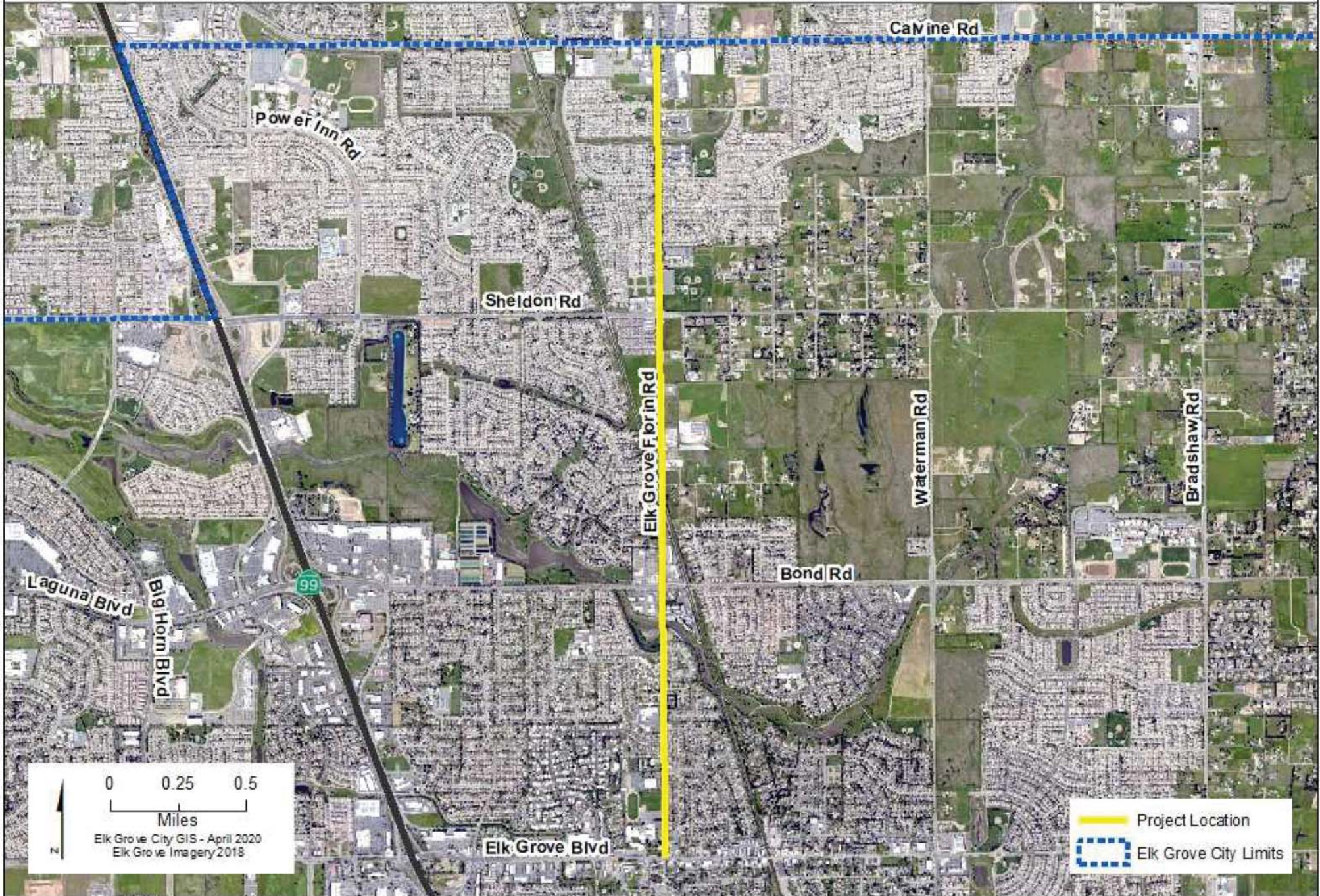


Exhibit C - WPR020 Project Streets List

Subzone	Street Name	Begin Location	End Location	Treatment	Approximate Area (SF)	Maintenance Zone
0	EXCELSIOR RD	SHELDON RD	CALVINE ROAD	CAPE SEAL	168,680	3
28	THADDEUS CT	KOSTER WAY	CDS	TYPE II - SLURRY SEAL	7,481	2
28	BACKER CT	SPRINGMONT DR	CDS- EAST END	TYPE II - SLURRY SEAL	7,949	2
28	IVYDALE CIRCLE	SPRINGMONY DR (SOUTH)	SPRINGMONT DR (NORTH)	TYPE II - SLURRY SEAL	38,792	2
28	MARCH WAY	PLUME WAY	VERDURE WAY	TYPE II - SLURRY SEAL	16,120	2
28	SPRINGMONT DR	SEASONS DR E	SEASONS DR (W)	TYPE II - SLURRY SEAL	94,384	2
28	CASSARO CT	SEASONS DR	CDS-SOUTH END	TYPE II - SLURRY SEAL	9,509	2
28	CONTENTE WAY	FOREST VISTA WAY	FOREST VISTA WAY	TYPE II - SLURRY SEAL	21,424	2
28	EVANSWOOD CT	SEASONS DR	CDS-SOUTH END	TYPE II - SLURRY SEAL	5,583	2
28	SCOTTSVIEW CT	SEASONS DR	CDS - SW END	TYPE II - SLURRY SEAL	4,413	2
28	KOSTER WAY	SPRINGMONT DR (N)	SPRINGMONT DR (S)	TYPE II - SLURRY SEAL	51,111	2
28	QUINTANNA CT	SEASONS DR	CDS-NORTH END	TYPE II - SLURRY SEAL	5,479	2
28	VERDURE WAY	SPRINGMONT DR	PLUME WY	TYPE II - SLURRY SEAL	45,738	2
28	PLUME WAY	VERDURE WY	SPRINGMONT DR	TYPE II - SLURRY SEAL	34,606	2
28	FOREST VISTA WAY	FOULKS RANCH DR	LAGUNA PARK DR	TYPE II - SLURRY SEAL	51,456	2
43	TARKENTON CT	ATKINS DR	CDS	TYPE II - SLURRY SEAL	14,144	1
43	UPSHAW WAY	ATKINS DR	MCLEAN DR	TYPE II - SLURRY SEAL	25,272	1
43	ISAAC WAY	SHANA WAY	MOSAIC WAY	TYPE II - SLURRY SEAL	21,502	1
43	ATKINS DR	WHITELOCK PKWY	MCLEAN DR	TYPE II - SLURRY SEAL	60,606	1
43	BRENNA WAY	MCLEAN DR	MOSAIC WAY	TYPE II - SLURRY SEAL	31,304	1
43	MOON LILY WAY	BLOSSOM RIDGE DR	WILD ORCHID WAY	TYPE II - SLURRY SEAL	18,954	1
43	ANNIE ST	WHITE LOTUS WAY	MCLEAN DR	TYPE II - SLURRY SEAL	26,442	1
43	ARCHES WAY	WHITE LOTUS WAY	MCLEAN DR	TYPE II - SLURRY SEAL	25,090	1
43	COCONUT TREE CT	WILD ORCHID WAY	CDS	TYPE II - SLURRY SEAL	7,839	1
43	NEWSOME CT	UPSHAW WAY	CDS	TYPE II - SLURRY SEAL	3,614	1
43	SHANA WAY	MOSAIC WY	WHITELOCK PKWY	TYPE II - SLURRY SEAL	34,840	1
43	WHITE LOTUS WAY	BLOSSOM RIDGE DR	MCLEAN DR	TYPE II - SLURRY SEAL	46,592	1
43	WILD ORCHID WAY	BLOSSOM RIDGE DR	MCCLEAN DR	TYPE II - SLURRY SEAL	63,102	1
43	BONSAI CT	WILD ORCHID WAY	CDS	TYPE II - SLURRY SEAL	5,304	1
43	NAMATH CIR	ATKINS DR	ATKINS DR	TYPE II - SLURRY SEAL	35,178	1
43	SILHOUETTE CT	WILD ORCHID WAY	CDS	TYPE II - SLURRY SEAL	5,356	1
43	HEWITT WAY	FRANKLIN HIGH RD	MOSAIC WAY	TYPE II - SLURRY SEAL	4,498	1
43	MOSAIC WAY	MCLEAN DR	SHANA WAY	TYPE II - SLURRY SEAL	67,444	1
60	BRIERTON CT	PEAK FOREST WAY	CDS	TYPE II - SLURRY SEAL	1,586	5
60	ALBACORE WAY	DENALI CIR	WINKLE CIR	TYPE II - SLURRY SEAL	59,462	5

Exhibit C - WPR020 Project Streets List

Subzone	Street Name	Begin Location	End Location	Treatment	Approximate Area (SF)	Maintenance Zone
60	YELLOWFIN WAY	ALBACORE WAY	DENALI CIR	TYPE II - SLURRY SEAL	32,110	5
60	DERBY WAY	BLOOMSBURY WAY	WESTMINISTER WAY	TYPE II - SLURRY SEAL	11,700	5
60	DEL WEBB BLVD	BRUCEVILLE RD	HATHERTON WAY	TYPE II - SLURRY SEAL	76,398	5
60	DEARNE WAY	PEAK FOREST WAY	HATHERTON WAY	TYPE II - SLURRY SEAL	25,870	5
60	OAKHAM WAY	WESTMINISTER WAY	SOLOMON DR	TYPE II - SLURRY SEAL	40,378	5
60	PEAK FOREST WAY	CDS	WESTMINISTER WAY	TYPE II - SLURRY SEAL	75,582	5
60	ABBEY CIR	SHEFFIELD WAY (N)	SHEFFIELD WAY (S)	TYPE II - SLURRY SEAL	32,526	5
60	HATHERTON WAY	N PEAK FOREST WAY	OAKHAM WAY	TYPE II - SLURRY SEAL	42,660	5
60	KENNET WAY	DEL WEBB BLVD	BARNESLEY WAY	TYPE II - SLURRY SEAL	17,654	5
60	ROTHSCHILD CT	SHEFFIELD WAY	CDS	TYPE II - SLURRY SEAL	7,488	5
60	SHEFFIELD WAY	CHATSWORTH CIR	BLOOMSBURY WAY	TYPE II - SLURRY SEAL	39,624	5
60	WESTMINSTER WAY	CHATSWORTH CIR (S)	OAKHAM WAY	TYPE II - SLURRY SEAL	78,182	5
60	CALDON WAY	DEL WEBB BLVD	BARNESLEY WAY	TYPE II - SLURRY SEAL	16,484	5
60	CHATSWORTH CIR	WESTMINSITER WAY (N)	WESTMINISTER WAY (S)	TYPE II - SLURRY SEAL	50,830	5
60	FOXBURGH CT	SHEFFIELD WAY	CDS	TYPE II - SLURRY SEAL	9,022	5
60	ASHBY WAY	PEAK FOREST WAY	WESTMINISTER WAY	TYPE II - SLURRY SEAL	11,700	5
60	BARNESLEY WAY	WESTMINISTER WAY	HATHERTON WAY	TYPE II - SLURRY SEAL	18,070	5
60	BLOOMSBURY WAY	SHEFFIELD WAY	CDS	TYPE II - SLURRY SEAL	15,340	5
60	NETHERBURY CT	SHEFFIELD WAY	CDS	TYPE II - SLURRY SEAL	7,254	5
60	SUNDERLAND WAY	BLOOMSBURY WAY	WESTMINISTER WAY	TYPE II - SLURRY SEAL	16,068	5
60	HELECONIA CT	WINKLE CIR	CDS	TYPE II - SLURRY SEAL	3,528	5
60	SOLOMON DR	HATHERTON WAY	WINKIE CIR	TYPE II - SLURRY SEAL	31,620	5
60	WINKLE CIR	DENALI CIR	CARINATA DR	TYPE II - SLURRY SEAL	49,010	5
69	CEONOTHUS CT	SPICEBERRY WAY	CDS	TYPE II - SLURRY SEAL	13,617	3
69	DIANTHUS WAY	WINTERBERRY DR	SHELDON NORTH DR	TYPE II - SLURRY SEAL	15,002	3
69	GREENTRAILS CT	GREENTRAILS WAY	CDS	TYPE II - SLURRY SEAL	10,911	3
69	GREENTRAILS WAY	VILLA SERENA DR	HATFIELD WAY	TYPE II - SLURRY SEAL	21,762	3
69	HARBOR HOUSE CT	HATFIELD WAY	CDS	TYPE II - SLURRY SEAL	10,971	3
69	HARBOR HOUSE WAY	GREENTRAILS WAY	HATFIELD WAY	TYPE II - SLURRY SEAL	7,020	3
69	HATFIELD WAY	HARBOR HOUSE WAY	GREENTRAILS WAY	TYPE II - SLURRY SEAL	6,760	3
69	HYACINTH CT	WINTERBERRY DR	CDS	TYPE II - SLURRY SEAL	10,550	3
69	HYDRANGEA CT	WINTERBERRY DR	CDS	TYPE II - SLURRY SEAL	12,135	3
69	LAVENDER WAY	LUPIN WAY	SPICEBERRY WAY	TYPE II - SLURRY SEAL	10,316	3
69	LUPIN CT	LAVENDER WAY	CDS	TYPE II - SLURRY SEAL	5,921	3
69	LUPIN WAY	WINTERBERRY DR	LAVENDER WAY	TYPE II - SLURRY SEAL	6,864	3

Exhibit C - WPR020 Project Streets List

Subzone	Street Name	Begin Location	End Location	Treatment	Approximate Area (SF)	Maintenance Zone
69	MAINSTAY CT	ADAMSTOWN WAY	CDS	TYPE II - SLURRY SEAL	10,789	3
69	MARVISTA CT	ADAMSTOWN WAY	CDS	TYPE II - SLURRY SEAL	15,573	3
69	MENODORA DR	MOUNTAIN BELL DR	WEST END	TYPE II - SLURRY SEAL	3,960	3
69	MOUNTAIN BELL DR	SHASTA LILY DR	MENODORA DR	TYPE II - SLURRY SEAL	77,652	3
69	NARCISSUS CT	WINTERBERRY DR	CDS	TYPE II - SLURRY SEAL	10,289	3
69	SILVER CROWN CT	MOUNTAIN BELL DRIVE	CDS	TYPE II - SLURRY SEAL	6,415	3
69	SPICEBERRY CT	SPICEBERRY WAY	CDS	TYPE II - SLURRY SEAL	6,337	3
69	SPICEBERRY WAY	LAVENDER WY	SHELDON NORTH DR	TYPE II - SLURRY SEAL	20,800	3
69	SUN SPRITE CT	PETUNIA WY	CDS	TYPE II - SLURRY SEAL	8,573	3
69	SUN SPRITE WAY	ZINNIA WY	PETUNIA WY	TYPE II - SLURRY SEAL	7,670	3
69	VILLA SERENA DR	POWER INN RD	GREENTRAILS WAY	TYPE II - SLURRY SEAL	4,824	3
69	WINTERBERRY DR	SPICEBERRY WAY	CALVINE ROAD	TYPE II - SLURRY SEAL	30,160	3
69	BANE BERRY CT	WINDSOR POINT WAY	CDS	CAPE SEAL	8,027	3
69	HEARTLEAF CT	PALAFAXIA WAY	CDS	CAPE SEAL	8,105	3
69	MISSION BELLS CT	MOUNTAIN BELL DR	CDS	CAPE SEAL	10,367	3
69	MOUNTAIN BELL CT	MENODORA DR	CDS	CAPE SEAL	10,575	3
69	WINDSOR POINT WAY	BLUE MAIDEN WAY	ZINNIA WAY	CAPE SEAL	9,932	3
69	ZINNIA WAY	WINDSOR POINT WY	MOUNTAIN BELL DR	CAPE SEAL	41,600	3
70	CHAMOMILE CT	GLADIOLA WAY	CDS	TYPE II - SLURRY SEAL	6,077	3
70	MORNING GLORY WAY	FREESIA DR	WEST END	TYPE II - SLURRY SEAL	8,814	3
70	CROSSTREES WAY	MAGNOLIA HILL WAY	TERRITORIAL WAY	TYPE II - SLURRY SEAL	9,412	3
70	ALYSSIUM CT	GLADIOLA WAY	CDS - EAST	TYPE II - SLURRY SEAL	6,545	3
70	JUNE BUG CT	MESA BROOK WAY	CDS - EAST END	TYPE II - SLURRY SEAL	5,615	3
70	SIERRA BROOK CT	SUMMER POINTE DRIVE	CDS	TYPE II - SLURRY SEAL	6,104	3
70	FELTON CREST WAY	MAGNOLIA HILL WAY	VISTA BROOK DR	TYPE II - SLURRY SEAL	41,834	3
70	SUMMER VISTA CT	SUMMER POINTE DR	CDS	TYPE II - SLURRY SEAL	7,747	3
70	RED CLOVER WAY	VISTA BROOK DR	FELTON CREST WY	TYPE II - SLURRY SEAL	28,210	3
70	TERRITORIAL WAY	VISTA BROOK DR	MAGNOLIA HILL WAY	TYPE II - SLURRY SEAL	43,134	3
70	SUMMER POINTE DR	SHELDON RD	SHASTA LILY DR	TYPE II - SLURRY SEAL	68,964	3
70	MESA BROOK WAY	SUMMER KNOLL WAY	CANYON BROOK WAY	TYPE II - SLURRY SEAL	41,236	3
70	VYTINA DR	SHASTA LILY DRIVE	SHELDON ROAD	TYPE II - SLURRY SEAL	38,280	3
70	GLADIOLA WAY	FREESIA DR	SHASTA LILY DR	TYPE II - SLURRY SEAL	27,482	3
70	FAIRHAVEN CT	MAGNOLIA HILL WAY	CDS	TYPE II - SLURRY SEAL	2,964	3
70	SUMMER KNOLL WAY	SUMMER POINTE DR	MESA BROOK WY	TYPE II - SLURRY SEAL	12,844	3
70	VISTA BROOK DR	SUMMER POINTE DRIVE	POWER INN RD	TYPE II - SLURRY SEAL	48,924	3

Exhibit C - WPR020 Project Streets List

Subzone	Street Name	Begin Location	End Location	Treatment	Approximate Area (SF)	Maintenance Zone
70	CANYON BROOK WAY	SUMMER POINTE DR	MESA BROOK WAY	TYPE II - SLURRY SEAL	10,946	3
70	MESA BROOK CT	CANYON BROOK WAY	CDS	TYPE II - SLURRY SEAL	5,980	3
70	ALPINE BLUE CT	SUMMER KNOLL WAY	CDS-NORTH END	TYPE II - SLURRY SEAL	6,603	3
70	SUMMIT BROOK CT	SUMMER POINTE DR	CDS-WEST END	TYPE II - SLURRY SEAL	7,117	3
70	SUMMER CREST CT	WINDSOR POINT WAY	CDS	TYPE II - SLURRY SEAL	6,941	3
70	WINDSOR POINT WAY	ASPEN BROOK WAY	BLUE MAIDEN WAY	TYPE II - SLURRY SEAL	20,410	3
70	STONEFLOWER WAY	MAGNOLIA HILL WY	TERRITORIAL WY	TYPE II - SLURRY SEAL	9,490	3
70	ASPEN BROOK WAY	SUMMER POINTE DR	CDS-WEST END	TYPE II - SLURRY SEAL	10,946	3
70	MAGNOLIA HILL WAY	VISTA BROOK DR	BLUE MAIDEN WAY	TYPE II - SLURRY SEAL	34,606	3
70	FIREMOSS WAY	SUMMER POINTE DR	WEST END	TYPE II - SLURRY SEAL	2,548	3
73	ALBERTON PL	GARRITY DR	CDS	TYPE II - SLURRY SEAL	9,489	3
73	ALEXIA CT	CANTWELL DR	CDS	TYPE II - SLURRY SEAL	9,503	3
73	BAISLEY CT	CANTWELL DR	CDS	TYPE II - SLURRY SEAL	12,661	3
73	BLACKMAN WAY	GARRITY DR	KINGMONT WAY	TYPE II - SLURRY SEAL	29,900	3
73	BROOKSTOWN PL	KINGMONT WAY	CDS	TYPE II - SLURRY SEAL	8,925	3
73	CAMPTON GLEN PL	KINGMONT WAY	NORTH END	TYPE II - SLURRY SEAL	13,461	3
73	CANTWELL DR	E STOCKTON BLVD	KINGMONT WAY	TYPE II - SLURRY SEAL	36,972	3
73	DELMONT WAY	GARRITY DR	CDS	TYPE II - SLURRY SEAL	4,830	3
73	EASTLEIGH CT	CANTWELL DR	CDS	TYPE II - SLURRY SEAL	11,719	3
73	GARRITY DR	SHELDON RD	SOUTH END	TYPE II - SLURRY SEAL	60,876	3
73	KINGMONT WAY	GARRITY DR	CANTWELL DR	TYPE II - SLURRY SEAL	18,850	3
76	NORTH CAMDEN DR	DORINGTON CT	SPRINGHURST DR	TYPE II - SLURRY SEAL	30,816	3
76	BRADBURY CT	CAMDEN LAKE WAY	CDS - SOUTH END	TYPE II - SLURRY SEAL	12,837	3
76	BLAKEMORE CT	ASHWELL WAY	NORTH END	CAPE SEAL	15,645	3
76	COOPERSTON WAY	NORTH CAMDEN DR	NORTH CAMDEN DR	CAPE SEAL	53,850	3
76	DORINGTON CT	N CAMDEN DR	EAST END	CAPE SEAL	10,107	3
76	ELY CT	WEST CAMDEN DR	WEST END	CAPE SEAL	10,887	3
76	ENGLISH INN CT	WEST CAMDEN DR	CDS - EAST END	CAPE SEAL	8,963	3
76	FRECKLES CT	WEST CAMDEN DR	SOUTH END	CAPE SEAL	8,807	3
76	FREEMARK WAY	N CAMDEN DR	EAST END	CAPE SEAL	16,763	3
76	HARTWELL CT	ASHWELL WAY	CDS	CAPE SEAL	9,769	3
76	HOLLYBROOK CT	NORTH CAMDEN DR	SOUTH END	CAPE SEAL	8,469	3
76	HOUNDSTOOTH CT	N CAMDEN DR	CDS - EAST END	CAPE SEAL	12,343	3
76	PLAYERS CT	WEST CAMDEN DR	EAST END	CAPE SEAL	11,800	3
76	ROUNDBOUT CT	WEST CAMDEN DR	CDS - NORTH END	CAPE SEAL	6,363	3

Exhibit C - WPR020 Project Streets List

Subzone	Street Name	Begin Location	End Location	Treatment	Approximate Area (SF)	Maintenance Zone
76	SEDEWICK CT	WEST CAMDEN DR	CDS - SOUTH END	CAPE SEAL	10,965	3
76	TOM THUMB CT	SOUTH CAMDEN WY	CDS - EAST END	CAPE SEAL	8,027	3
76	YARMOUTH CT	N CAMDEN DR	CDS - EAST END	CAPE SEAL	10,471	3
85	3RD AVE	SIERRA ST	ELK GROVE BLVD	CAPE SEAL	11,640	3

WPR020 Project Streets List Total

3,248,910

Exhibit D - WPR021 Project Location List

Subzone	Street Name	Begin Location	End Location	Anticipated Treatment	Area (sf)	Maint. Zone	Fund #
13	AEGINA CT	TEGAN RD	CDS-SOUTH END	TYPE II SLURRY SEAL	10,627	2	227
13	ALLBRITTON WAY	THIRA CT	LAGUNA PARK DR	TYPE II SLURRY SEAL	33,722	2	227
13	BIRDSEYE WAY	CORNFIELD WAY	BRAMBLEWOOD WAY	CAPE SEAL	28,600	2	227
13	BOREAL WAY	STORY WAY	CAREYBACK AVE	TYPE II SLURRY SEAL	49,400	2	227
13	BRAMBLEWOOD WAY	WARMSPRINGS ST	DWIGHT RD	TYPE II SLURRY SEAL	60,900	2	227
13	CAREYBACK AVE	WARMSPRINGS ST	BOREAL WAY	TYPE II SLURRY SEAL	52,260	2	227
13	CORNFIELD WAY	WARMSPRINGS ST	BRAMBLEWOOD WAY	CAPE SEAL	23,920	2	227
13	DRAKES BAY CT	LAGUNA WEST WAY	CDS	TYPE II SLURRY SEAL	9,691	2	227
13	EVIA CT	TINOS WAY	CDS-WEST END	TYPE II SLURRY SEAL	6,025	2	227
13	FIGTREE CT	CAREYBACK AVE	CDS-SOUTH END	TYPE II SLURRY SEAL	8,781	2	227
13	FLOX WAY	STORY WAY	FRANKLIN BLVD	TYPE II SLURRY SEAL	27,855	2	227
13	FREITAG WAY	MYKONOS WAY	WEST END	TYPE II SLURRY SEAL	45,838	2	227
13	HYDRA WAY	SANTORINI DR	FREITAG WAY	TYPE II SLURRY SEAL	22,542	2	227
13	LAGUNA PARK DR	ALLBRITTON WAY	FRANKLIN BLVD	TYPE II SLURRY SEAL	35,768	2	227
13	LAGUNA WEST WAY	SANTORINI DR	STINSON BEACH WAY	TYPE II SLURRY SEAL	33,150	2	227
13	LANETRY CT	CAREYBACK AVE	CDS-SOUTH END	CAPE SEAL	10,549	2	227
13	LEVANT CT	CAREYBACK AVE	CDS	CAPE SEAL	10,263	2	227
13	LIMNOS CT	SANTORINI DR	CDS-WEST END	CAPE SEAL	6,181	2	227
13	MAPLEPLAIN AVE	BIRDSEYE WAY	BRAMBLEWOOD WAY	CAPE SEAL	17,758	2	227
13	MAPLEPLAIN AVE	BRAMBLEWOOD WAY	BOREAL WAY	TYPE II SLURRY SEAL	28,782	2	227
13	MARSEILLE CT	WARMSPRINGS ST	CDS-WEST END	TYPE II SLURRY SEAL	16,451	2	227
13	MEADOWFOAM CT	CAREYBACK AVE	CDS-SOUTH END	CAPE SEAL	9,301	2	227
13	MISSION BEACH CT	STINSON BEACH WAY	CDS	TYPE II SLURRY SEAL	5,817	2	227
13	MONACO WAY	PORTOFINO DR	EAST END	TYPE II SLURRY SEAL	3,250	2	227
13	MYKONOS WAY	SANTORINI DR	EAST END	TYPE II SLURRY SEAL	20,722	2	227
13	MYKONOS WAY	SANTORINI DR	WEST END	TYPE II SLURRY SEAL	22,821	2	227
13	NAXOS WAY	HYDRA WAY	END (NORTH)	TYPE II SLURRY SEAL	12,000	2	227
13	NAXOS WAY	MYKONOS WAY	HYDRA WAY	TYPE II SLURRY SEAL	18,720	2	227
13	NEWPORT WEST WAY	TEGAN RD	STINSON BEACH WAY	TYPE II SLURRY SEAL	20,592	2	227
13	NICOSIA CT	FREITAG WAY	CDS - WEST END	TYPE II SLURRY SEAL	6,883	2	227
13	PINEFIELD CT	CAREYBACK AVE	CDS-SOUTH END	TYPE II SLURRY SEAL	6,448	2	227
13	PIRAIEUS CT	FREITAG WY	WEST END	TYPE II SLURRY SEAL	7,481	2	227
13	POROS CT	NAXOS WY	CDS-EAST END	TYPE II SLURRY SEAL	6,181	2	227
13	PORTOFINO DR	DWIGHT RD	WARMSPRINGS ST	TYPE II SLURRY SEAL	42,768	2	227
13	SAINT RAPHAEL CT	PORTOFINO DR	CDS-WEST END	TYPE II SLURRY SEAL	12,057	2	227

Exhibit D - WPR021 Proejct Location List

Subzone	Street Name	Begin Location	End Location	Anticipated Treatment	Area (sf)	Maint. Zone	Fund #
13	SALONIKA CT	FREITAG WY	CDS - WEST END	TYPE II SLURRY SEAL	6,155	2	227
13	SAN MARINO CT	FREITAG WY	CDS - END	TYPE II SLURRY SEAL	8,157	2	227
13	SANTORINI DR	LAGUNA BLVD	THIRA WY	TYPE II SLURRY SEAL	59,885	2	227
13	SARDINIA CT	PORTOFINO DR	CDS-SOUTH END	TYPE II SLURRY SEAL	14,397	2	227
13	SCAMPI CT	CAREYBACK AVE	CDS-SOUTH END	TYPE II SLURRY SEAL	9,587	2	227
13	STINSON BEACH WAY	SANTORINI DRIVE	TEGAN ROAD	TYPE II SLURRY SEAL	53,534	2	227
13	STORY WAY	BOREAL WY (S)	FLOX WAY	TYPE II SLURRY SEAL	27,456	2	227
13	STORY WAY	FLOX WY	BOREAL WY-NORTH END	TYPE II SLURRY SEAL	13,000	2	227
13	TEGAN RD	SANTORINI DR	FRANKLIN BLVD	TYPE II SLURRY SEAL	52,020	2	227
13	TESTERMAN WAY	FREITAG WY	WARMSPRING ST	TYPE II SLURRY SEAL	30,394	2	227
13	THIRA CT	ALLBRITTON WAY	CDS	TYPE II SLURRY SEAL	8,599	2	227
13	THIRA WAY	SANTORINI DRIVE	ALLBRITTON WAY	TYPE II SLURRY SEAL	12,350	2	227
13	TINOS WAY	MYKONOS WY	TEGAN RD	TYPE II SLURRY SEAL	12,220	2	227
13	VENICE CT	PORTOFINO DR	CDS-WEST END	TYPE II SLURRY SEAL	12,369	2	227
13	VENTURA WEST CT	NEWPORT WEST WAY	CDS	TYPE II SLURRY SEAL	10,367	2	227
13	WARMSPRINGS ST	TESTERMAN WY	NORTH END	TYPE II SLURRY SEAL	70,170	2	227
13	ZACCARO WAY	TESTERMAN WY	WARMSPRIN ST	TYPE II SLURRY SEAL	10,738	2	227
41	EPOCH DR	GLACIAL WAY	WILLARD PKWY	TYPE II - MICROSURFACING	9,600	1	261
41	BILBY RD	200 E/O UPRR CROSSING	WILLARD PKWY	TYPE II - MICROSURFACING	34,560	1	261
41	GLACIAL WAY	FOSSIL WAY	ICE AGE WAY	TYPE II SLURRY SEAL	20,800	1	261
41	ICE AGE WAY	FOSSIL WAY	RAPTOR CT	TYPE II SLURRY SEAL	27,560	1	261
41	FOSSIL WAY	GLACIAL WAY	ICE AGE WAY	TYPE II SLURRY SEAL	32,890	1	261
41	BUCKLAND WAY	FOSSIL WAY	ICE AGE WAY	TYPE II SLURRY SEAL	21,600	1	261
41	AMMOLITE WAY	TUSK WAY	TUSK WAY	TYPE II SLURRY SEAL	26,000	1	261
41	ARTIFACT CT	FOSSIL WAY	CDS	TYPE II SLURRY SEAL	12,220	1	261
41	EPOCH DR	WILLARD PKWY	GLACIAL WAY	TYPE II SLURRY SEAL	4,800	1	261
41	FOSSIL WAY	STOVAL DR	GLACIAL WAY	TYPE II SLURRY SEAL	326,560	1	261
41	MASTODON WAY	SILTSTONE WAY	FOSSIL WAY	TYPE II SLURRY SEAL	20,410	1	261
41	RAPTOR CT	ICE AGE WAY	CDS	TYPE II SLURRY SEAL	9,490	1	261
41	SILTSTONE WAY	STOVAL DR	FOSSIL WAY	TYPE II SLURRY SEAL	29,640	1	261
41	STEPPE CT	SILTSTONE WAY	CDS	TYPE II SLURRY SEAL	11,960	1	261
41	STOVAL DR	FOSSIL WAY	BILBY RD	TYPE II SLURRY SEAL	3,552	1	261
41	STOVAL DR	BILBY RD	FOSSIL WAY	TYPE II SLURRY SEAL	1,776	1	261
41	TUSK WAY	ICE AGE WAY	RAPTOR CT	TYPE II SLURRY SEAL	53,300	1	261
58	CIVIC CENTER DRIVE	WYMARK DRIVE	BIG HORN BOULEVARD	TYPE II - MICROSURFACING	49,770	5	265

Exhibit D - WPR021 Project Location List

Subzone	Street Name	Begin Location	End Location	Anticipated Treatment	Area (sf)	Maint. Zone	Fund #
58	CIVIC CENTER DRIVE	BRUCEVILLE ROAD	WYMARK DRIVE	TYPE II - MICROSURFACING	94,710	5	265
58	CIVIC CENTER DRIVE	1352' E/O BIG HORN BOULEVARD	LAGUNA SPRINGS DRIVE	TYPE II - MICROSURFACING	111,720	5	265
58	WYMARK DR	ELK GROVE BLVD	CIVIC CENTER DR	TYPE II - MICROSURFACING	39,510	5	265
61	GENEX WAY	WYMARK DR	PHILTA WAY	TYPE II SLURRY SEAL	26,468	5	265
61	ENVIRO WAY	GENEX WAY	PHILTA WAY	TYPE II SLURRY SEAL	15,782	5	265
61	SUAREZ WAY	DENALI CIR	WYMARK DR	TYPE II SLURRY SEAL	28,730	5	265
61	DEMUI WAY	WYMARK DR	PHILTA WAY	TYPE II SLURRY SEAL	20,800	5	265
61	PHILTA WAY	WYMARK DR	ENVIRO WAY	TYPE II SLURRY SEAL	17,784	5	265
61	PHILTA WAY	ENVIRO WAY	DENALI CIR	TYPE II SLURRY SEAL	34,632	5	265
100	NEBBIOLO CT	LOIRE VALLEY WAY	CDS	TYPE II SLURRY SEAL	15,521	3	263
100	CARIGNAN PL	SAUTERNE WAY	CDS	TYPE II SLURRY SEAL	7,670	3	263
100	CORTON WAY	RHONE VALLEY WAY	COTE D OR DR	TYPE II SLURRY SEAL	15,714	3	263
100	COTE D OR DR	RHONE RIVER DR	WYLAND DR	TYPE II SLURRY SEAL	26,475	3	263
100	LOIRE VALLEY WAY	RHONE RIVER DR	END	TYPE II SLURRY SEAL	21,168	3	263
100	MEDOC WAY	RHONE VALLEY WAY	LOIRE VALLEY WAY	TYPE II SLURRY SEAL	9,423	3	263
100	MOURVERDE CT	CORTON WAY	CDS	TYPE II SLURRY SEAL	12,687	3	263
100	OREO RANCH CIR	RHONE RIVER DR	LOIRE VALLEY WAY	TYPE II SLURRY SEAL	36,348	3	263
100	PINOT GOLD PL	SAUTERNE WAY	NORTH END	TYPE II SLURRY SEAL	7,566	3	263
100	PINOT BLANC CT	SONOMA CREEK DR	CDS	TYPE II SLURRY SEAL	8,394	3	263
100	PINTO RANCH CT	OREO RANCH CIR	CDS	TYPE II SLURRY SEAL	2,158	3	263
100	QUARTER RANCH CT	RHONE RIVER DR	CDS	TYPE II SLURRY SEAL	9,074	3	263
100	RHONE RIVER DR	MOSHER RD	NORTH END	TYPE II SLURRY SEAL	93,888	3	263
100	RHONE VALLEY WAY	COTE D OR DR	RHONE RIVER DR	TYPE II SLURRY SEAL	39,771	3	263
100	ROAN RANCH CIR	RHONE RIVER DR	RHONE RIVER DR	TYPE II SLURRY SEAL	36,036	3	263
100	RUBY MERLOT PL	SAUTERNE WAY	NORTH END	TYPE II SLURRY SEAL	8,242	3	263
100	SAUTERNE WAY	RHONE RIVER DR	WYLAND DR	TYPE II SLURRY SEAL	29,016	3	263
100	SCHEUREBE PL	RHONE RIVER DR	WEST END	TYPE II SLURRY SEAL	14,196	3	263
100	SHIRAZ WAY	SAUTERNE WAY	COTE D OR DR	TYPE II SLURRY SEAL	15,106	3	263
100	SONOMA CREEK DR	LOIRE VALLEY WY	MOSHER RD	TYPE II SLURRY SEAL	22,005	3	263
100	SYRAH CT	SONOMA CREEK DR	CDS	TYPE II SLURRY SEAL	10,905	3	263
100	TREBBIANO CIR	RHONE RIVER DR	RHONE RIVER DR	TYPE II SLURRY SEAL	39,754	3	263
100	SHIRAZ PL	SAUTERNE WAY	NORTH END	TYPE II SLURRY SEAL	8,190	3	263
100	ALIGOTE PLACE	SHIRAZ WAY	CDS	TYPE II SLURRY SEAL	7,479	3	263
100	WYLAND DR	COTE D OR DR	NORTH END	TYPE II SLURRY SEAL	19,500	3	263

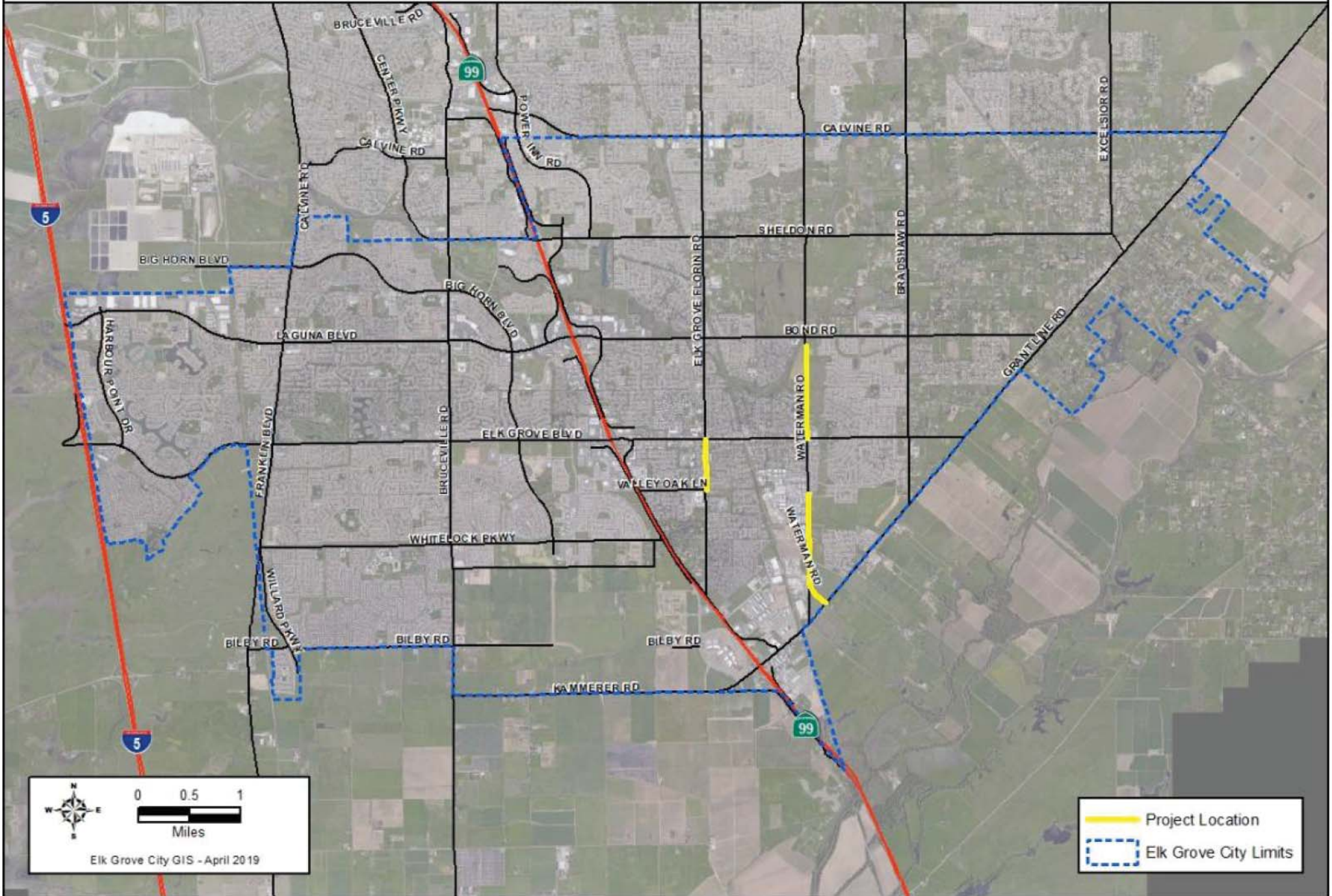
WPR021 Project Streets List Total

2,748,412

Arterial Roads Rehabilitation and Bicycle Lane Improvements - WPR014

Project Location Map

EXHIBIT E

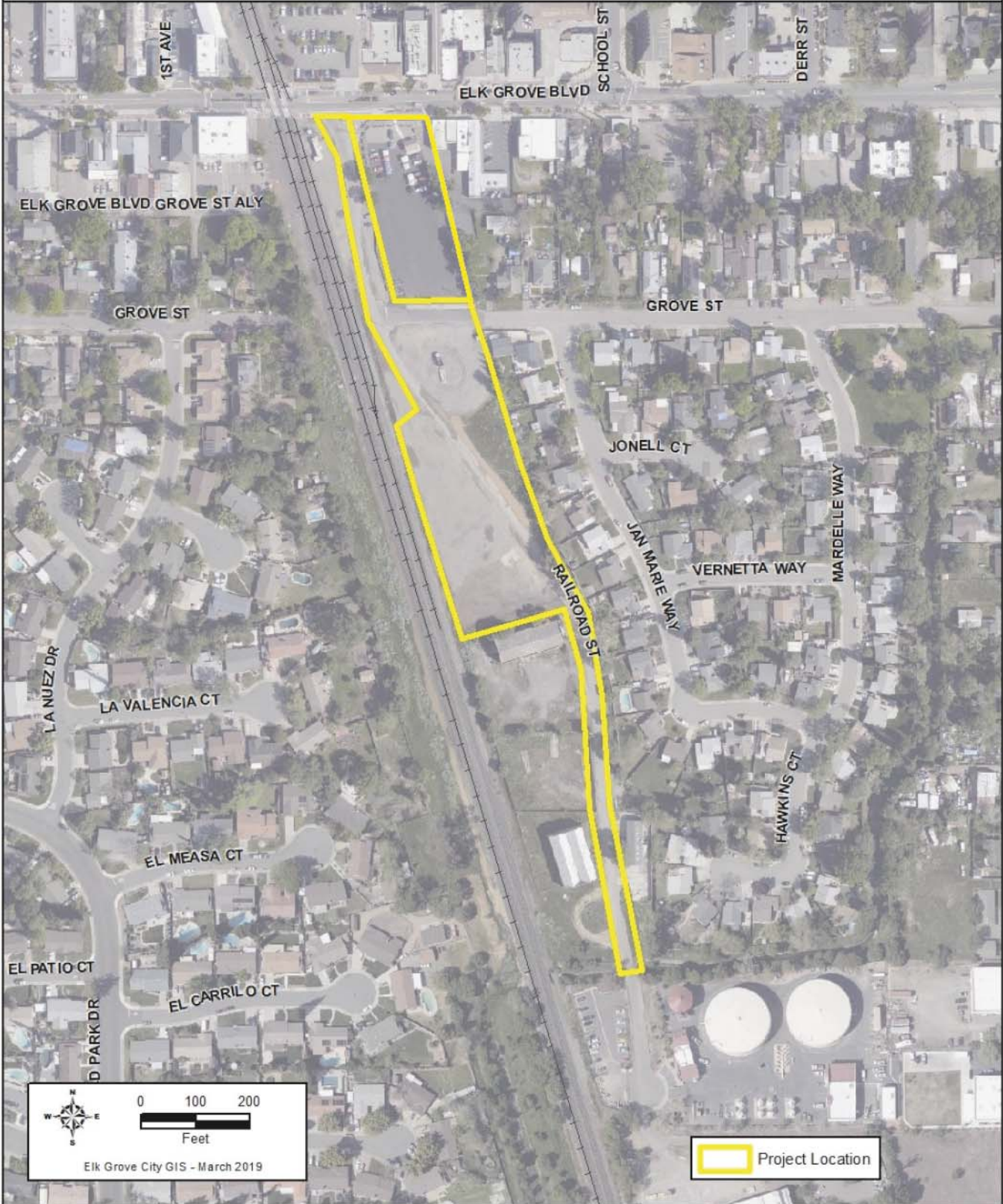


0 0.5 1
Miles
Elk Grove City GIS - April 2019

Project Location
Elk Grove City Limits

EXHIBIT F

Railroad St Improvements and Old Town Plaza Phases 2 and 3 Project (WTR049/WCE022) Project Location Map



CERTIFICATION
ELK GROVE CITY COUNCIL RESOLUTION NO. 2021-140

STATE OF CALIFORNIA)
COUNTY OF SACRAMENTO) ss
CITY OF ELK GROVE)

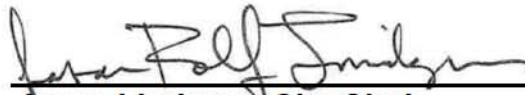
I, Jason Lindgren, City Clerk of the City of Elk Grove, California, do hereby certify that the foregoing resolution was duly introduced, approved, and adopted by the City Council of the City of Elk Grove at a regular meeting of said Council held on May 26, 2021 by the following vote:

AYES: **COUNCILMEMBERS:** *Singh-Allen, Nguyen, Hume, Spease, Suen*

NOES: **COUNCILMEMBERS:** *None*

ABSTAIN: **COUNCILMEMBERS:** *None*

ABSENT: **COUNCILMEMBERS:** *None*



Jason Lindgren, City Clerk
City of Elk Grove, California